

# La Martine

T A E arquitectos  
Sury Attie  
septiembre 1998

Proyecto:

T A E arquitectos

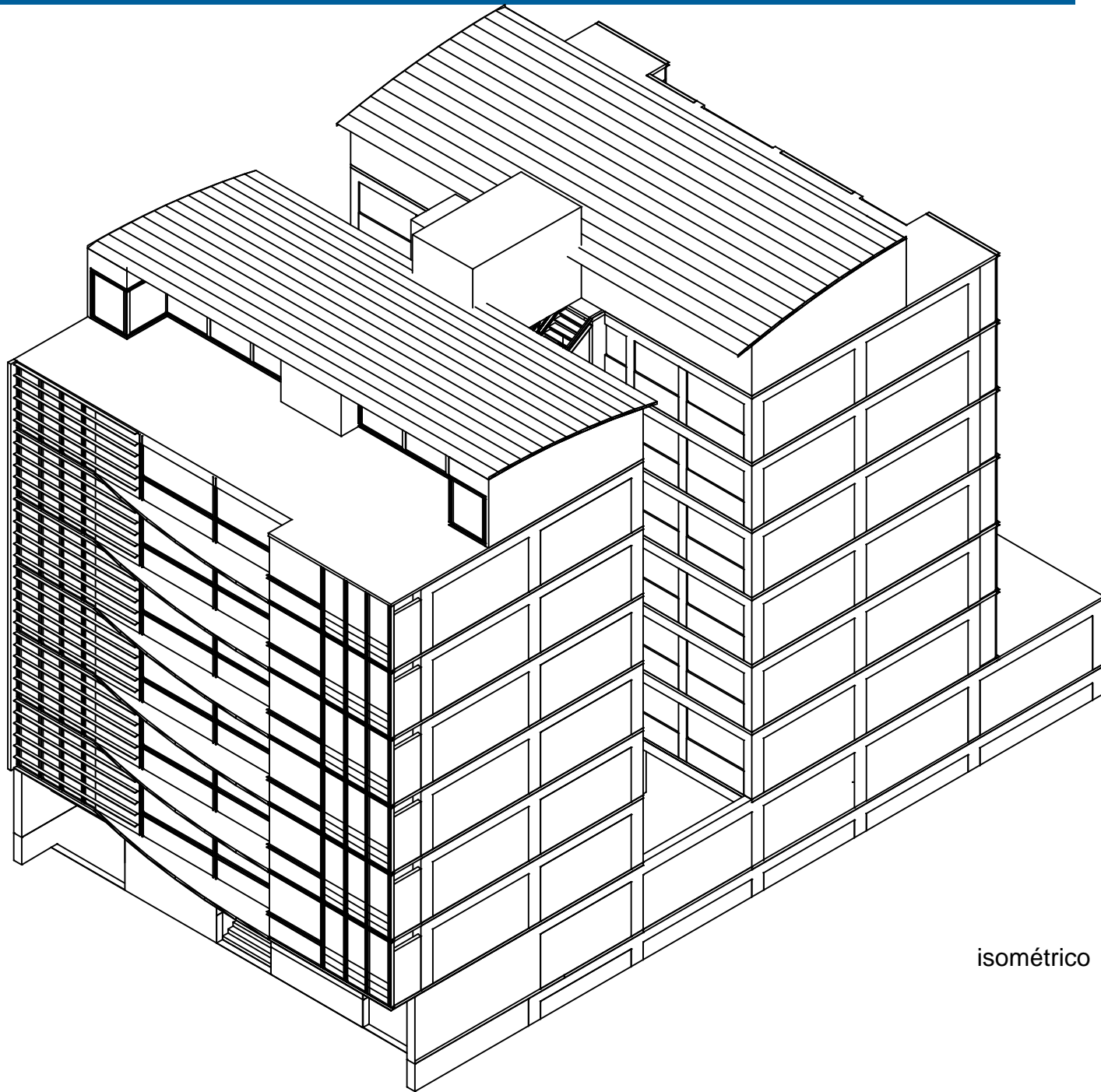
**Ubicación:** La Martine #224. col Polanco  
México D.F.

**Dirección:** Sury Attie

**Coordinación:** Sury Attie

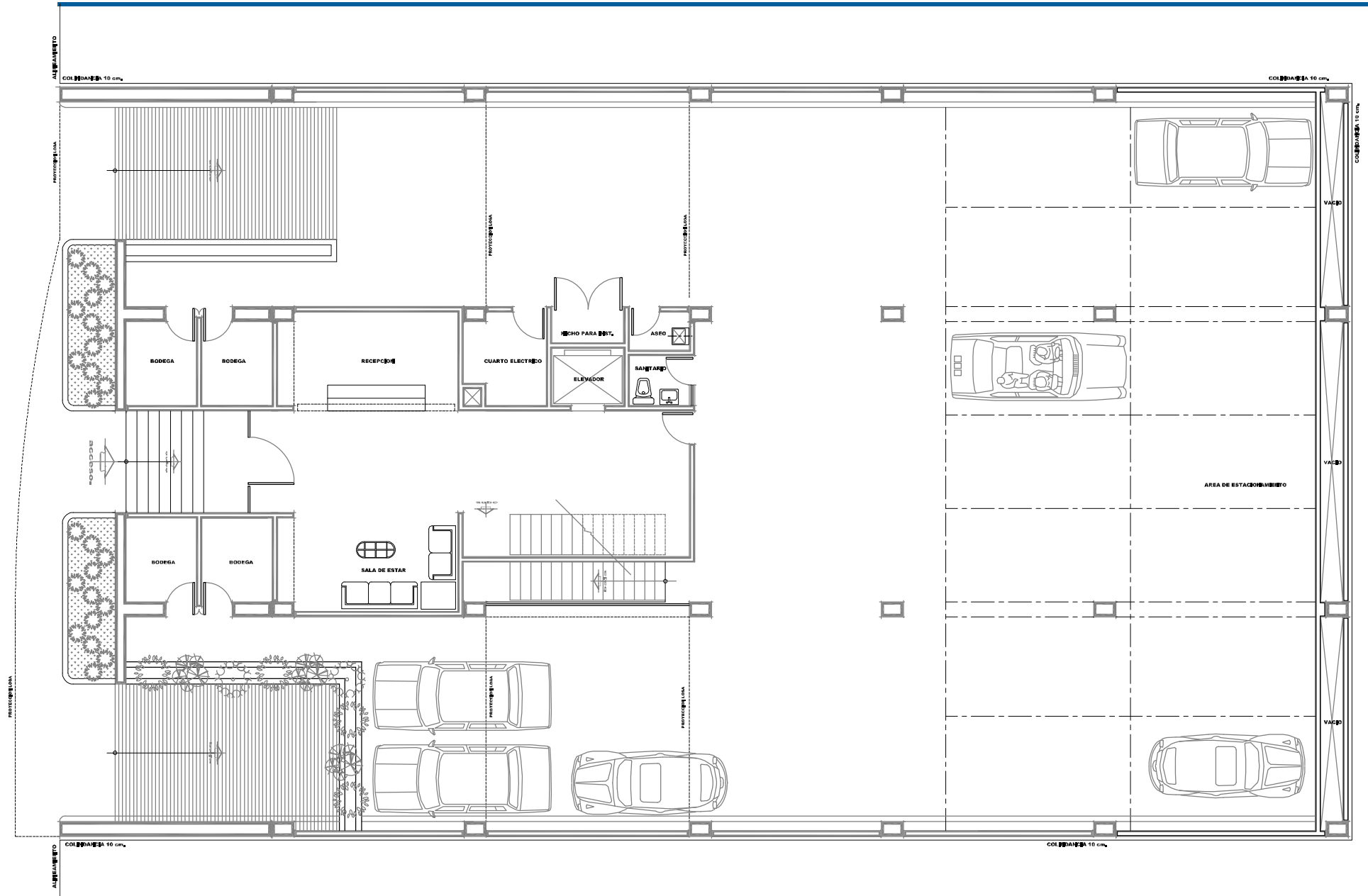
**Dibujo:** Fernando Fernández  
Luis Hernández

**Fecha:** 1998

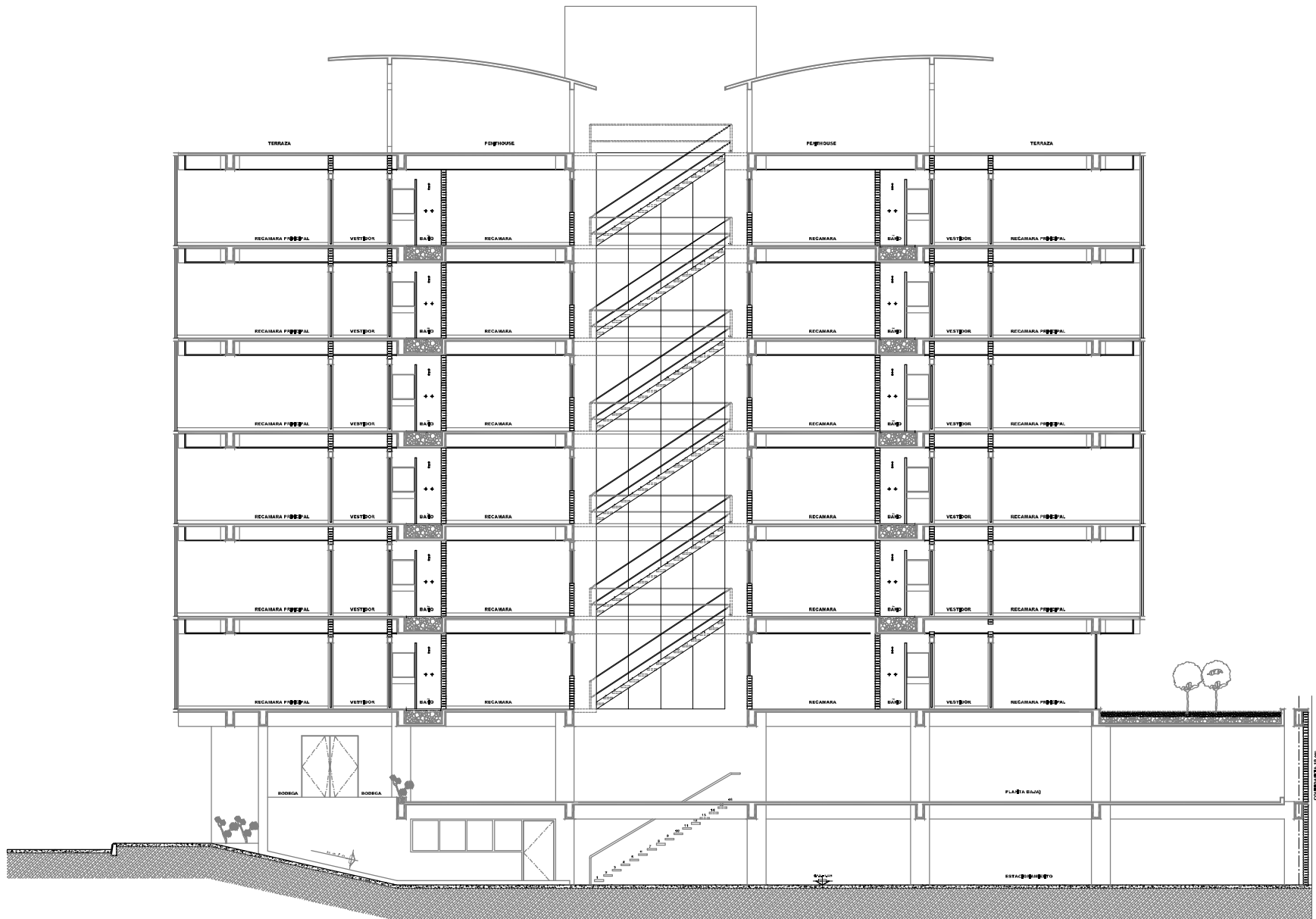


isométrico

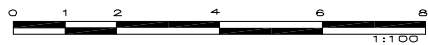
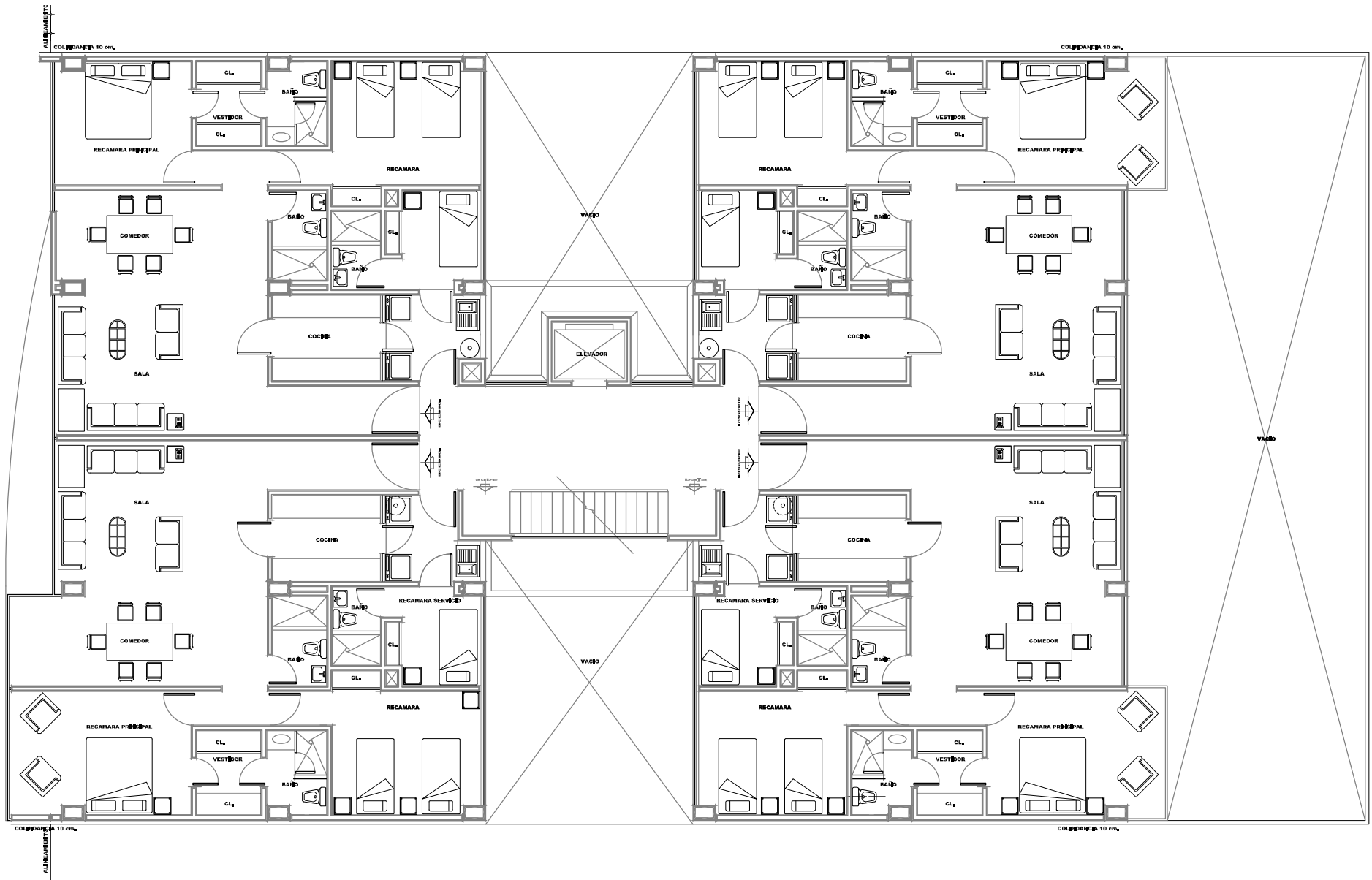
# La Martine



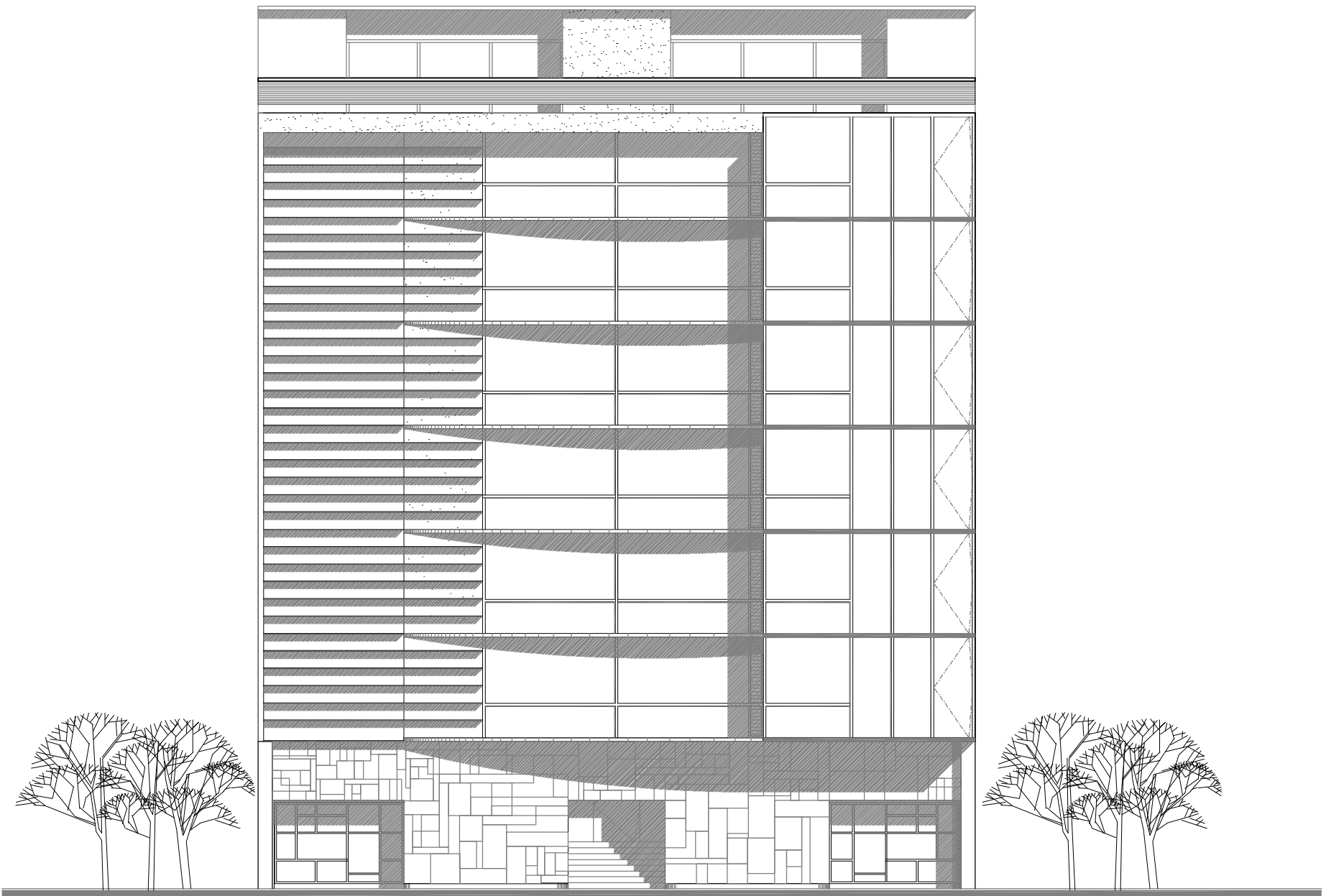
planta baja



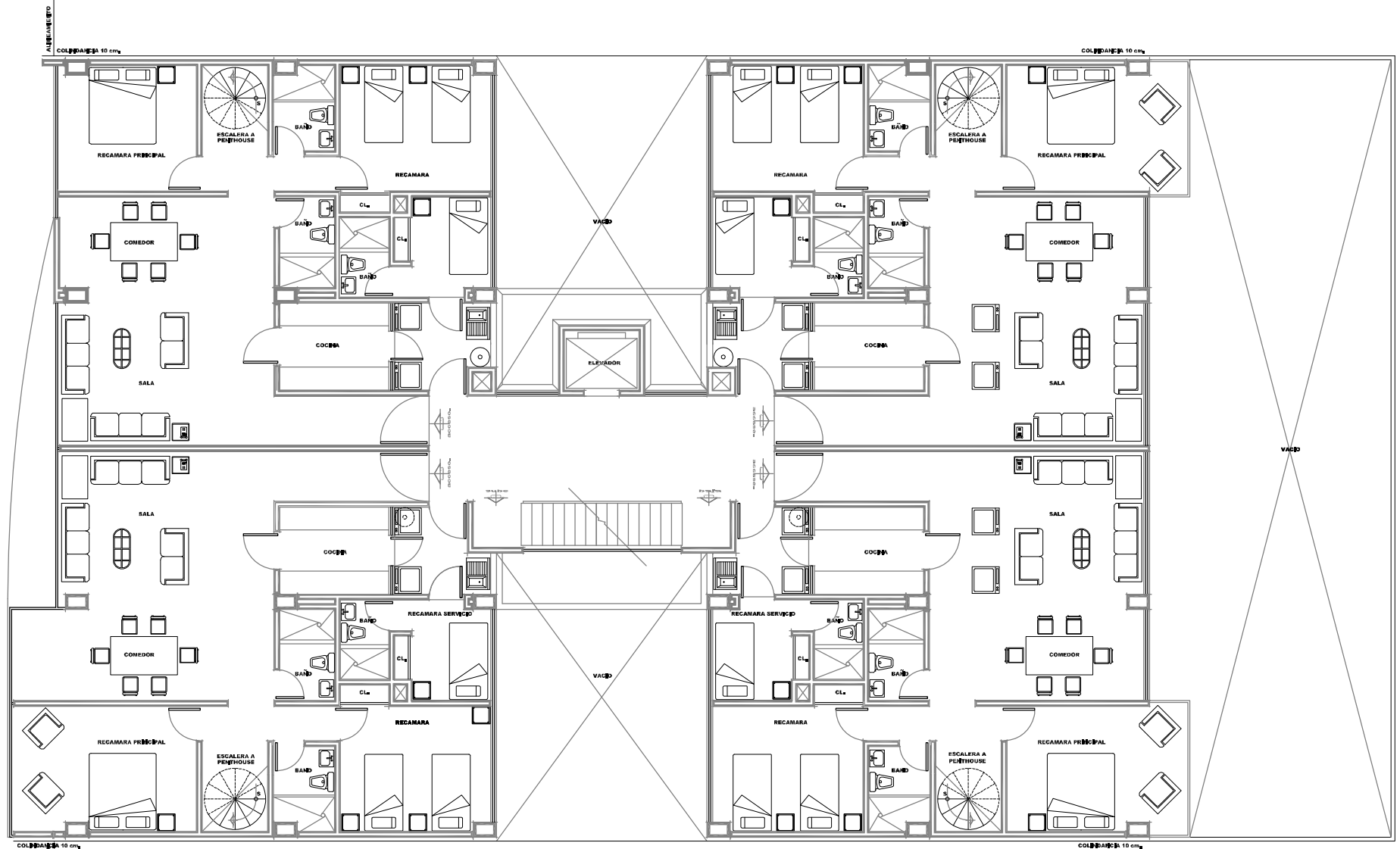
corte general



planta tipo

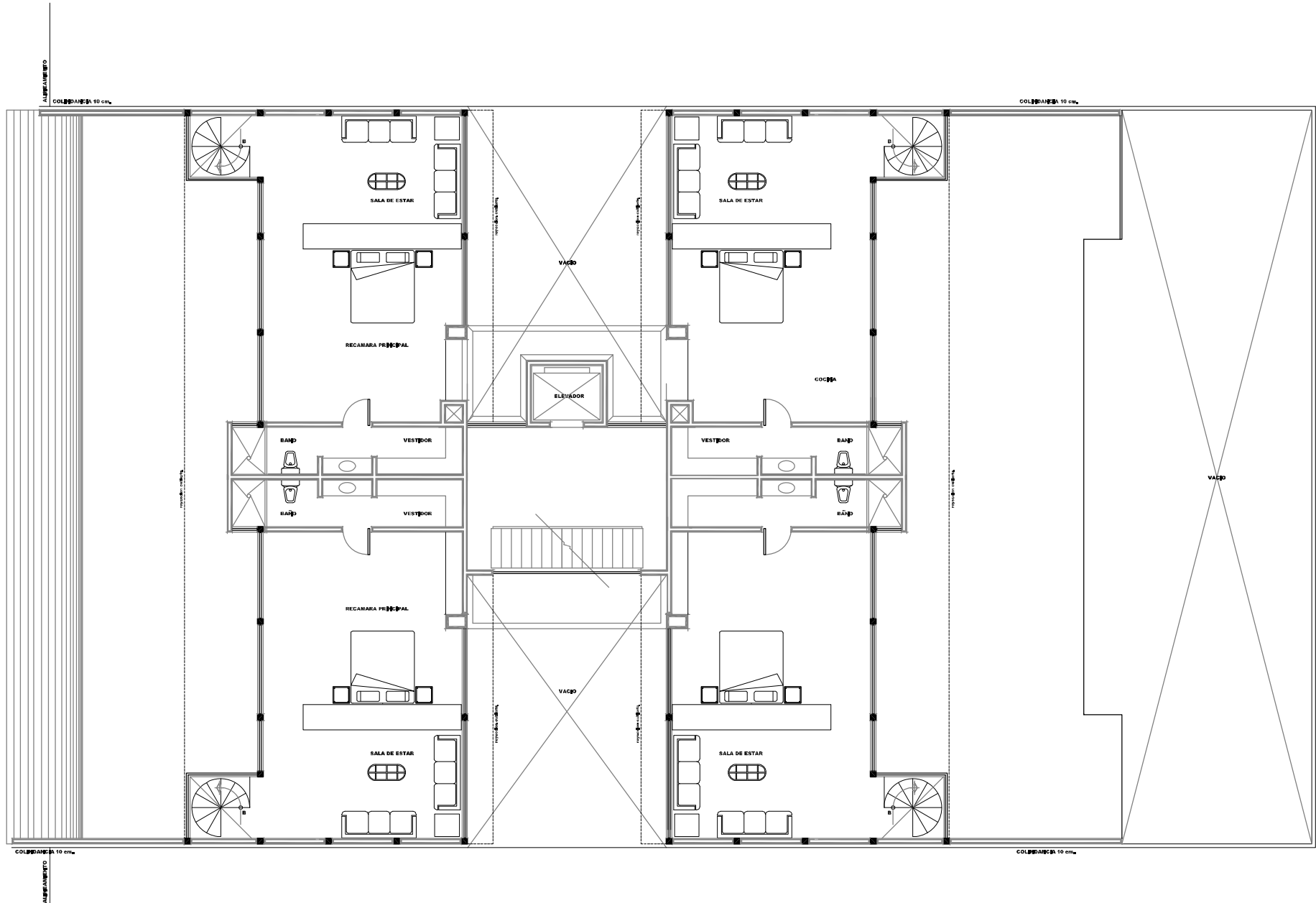


fachada principal



planta baja penthouse





planta alta penthouse